

KLE SOCIETY'S
SCP ARTS, SCIENCE AND DDS COMMERCE COLLEGE MAHALINGPUR
(ACCREDITED AT 'B++' WITH 2.81 CGPA)

Phone: 08350-270235

Website: www.klescpcdds.edu.in

E-mail: scpdgcol@gmail.com

STUDENT SATISFACTORY SURVEY (SSS)

Kindly give us your valuable feedback for further improvement of the Institute. Your suggestion will be of great use to improve the quality of our academic programmes and enhance the credibility of your alma mater.

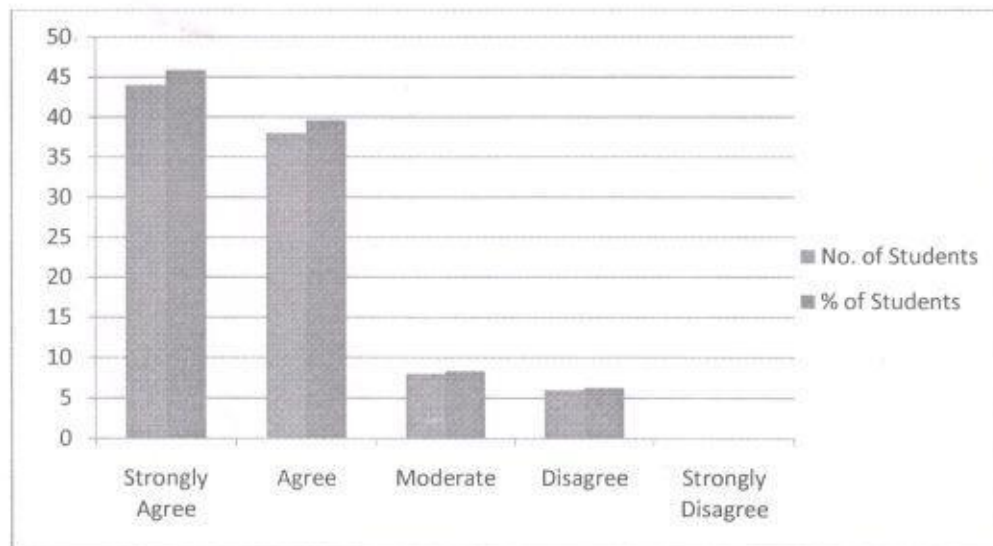
Degree (Tick) : B.A / B.Sc / B.Com / M.Com

Year Completion: 2020-21

1. The institution makes effort to engage students in the monitoring, review and continuous quality improvement of the teaching learning process.

Response	Strongly Agree	Agree	Moderate	Disagree	Strongly Disagree
No. of Students	44	38	8	6	0
% of Students	45.83	39.58	8.33	6.25	0.00

Percentage Response of Students on Quality Improvement

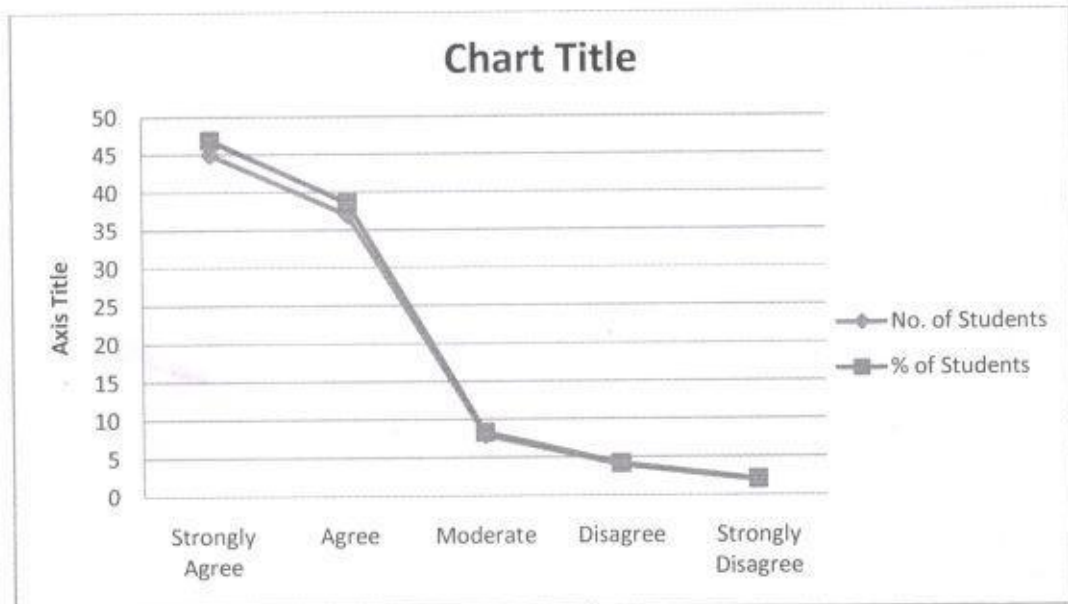



GRADE-1 PRINCIPAL
K.L.E. Society's
S.C.P.Arts, Science & B.D.S Commerce College
MAHALINGPUR-587312, Dist. Bagalkot

2. The institute/teachers use student centric methods, such as experimental learning, participative learning and problem solving methodologies for enhancing.

Response	Strongly Agree	Agree	Moderate	Disagree	Strongly Disagree
No. of Students	45	37	8	4	2
% of Students	46.88	38.54	8.33	4.17	2.08

Percentage of Response of Students on Use Student Centric Methods

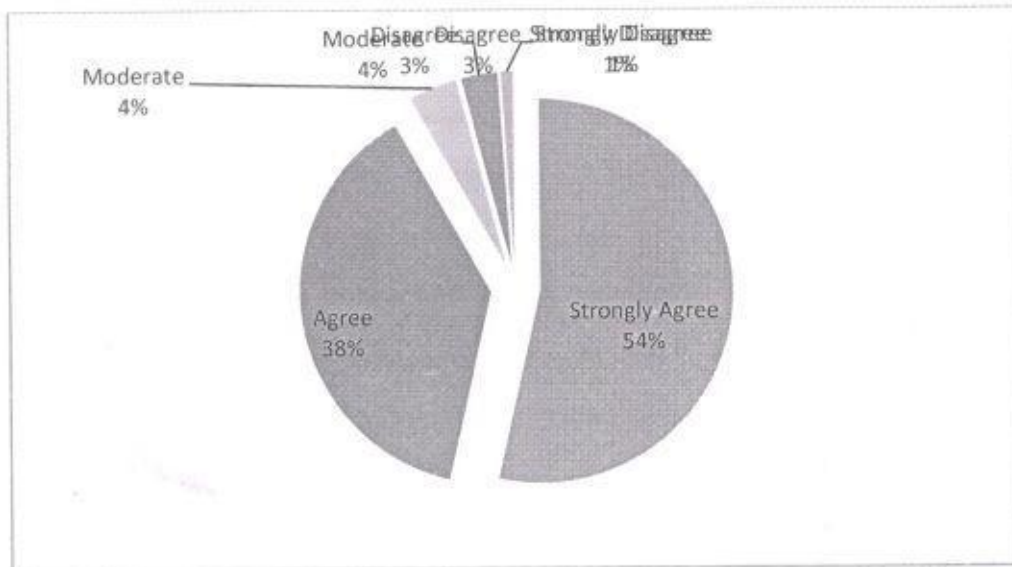



GRADE-1 PRINCIPAL
 K.L.E. Society's
 S.C.P. Arts, Science & B.D.S. Commerce College
 MAHALINGPUR-587312, Dist. Bagalkot.

2. The teacher illustrates the concepts through examples and applications.

Response	Strongly Agree	Agree	Moderate	Disagree	Strongly Disagree
No. of Students	52	37	4	3	1
% of Students	54.17	38.54	4.17	3.13	1.04

Percentage Response of Students on Illustration of Concepts by Teacher

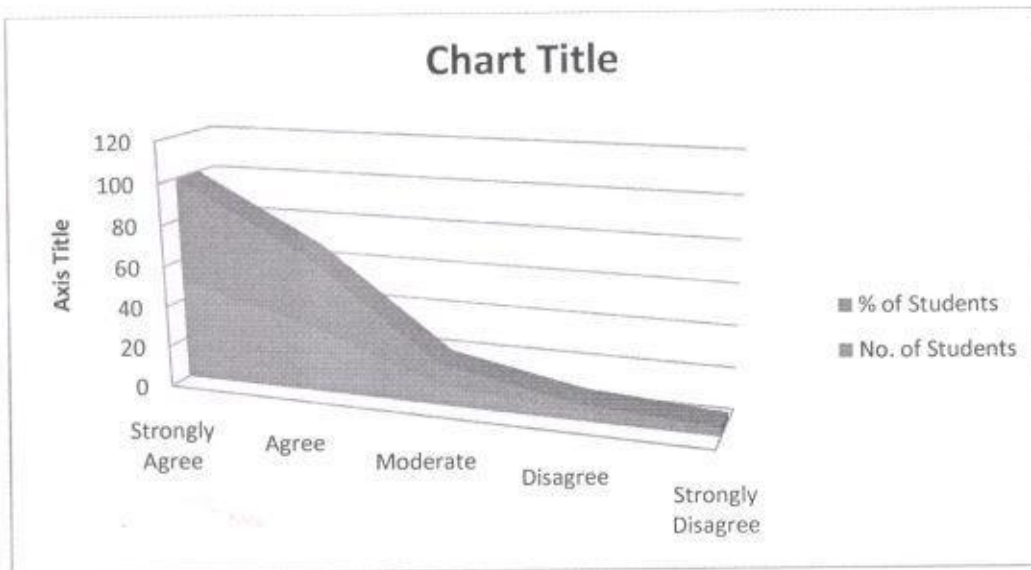


[Signature]
GRADE-1 PRINCIPAL
 K.L.E. Society's
 S.C.P. Arts, Science & G.D.S. Commerce College
 MAHALINGPUR-587312, Dist. Bagalkot

3. Teachers encourage you to participate in extracurricular activities.

Response	Strongly Agree	Agree	Moderate	Disagree	Strongly Disagree
No. of Students	49	33	10	4	2
% of Students	51.04	34.38	10.42	4.17	2.08

Percentage Responses of Students on Encouragement to Participation in Extra Curriculum Activities

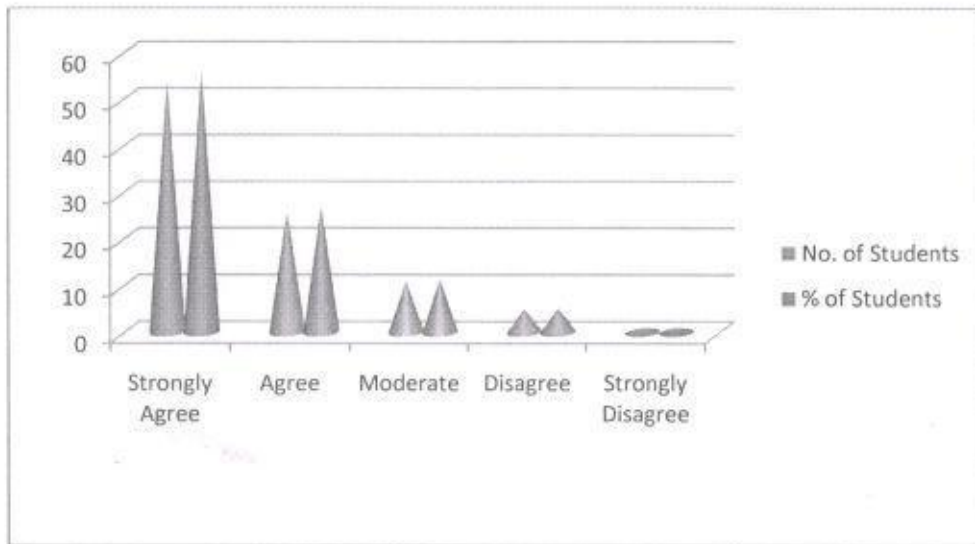



GRADE-1 PRINCIPAL
 K.L.E. Society's
 S.C.P. Arts, Science & B.D.S. Commerce College
 MAHALINGPUR-587312, Dist. Bagalkot.

4. Efforts are made by the institute/teachers to inculcate soft skills, life skills and employability skills to make you.

Response	Strongly Agree	Agree	Moderate	Disagree	Strongly Disagree
No. of Students	54	26	11	5	1
% of Students	56.25	27.08	11.46	5.21	1.04

Percentage Responses of Students on Efforts Made for Development of Soft skills etc.

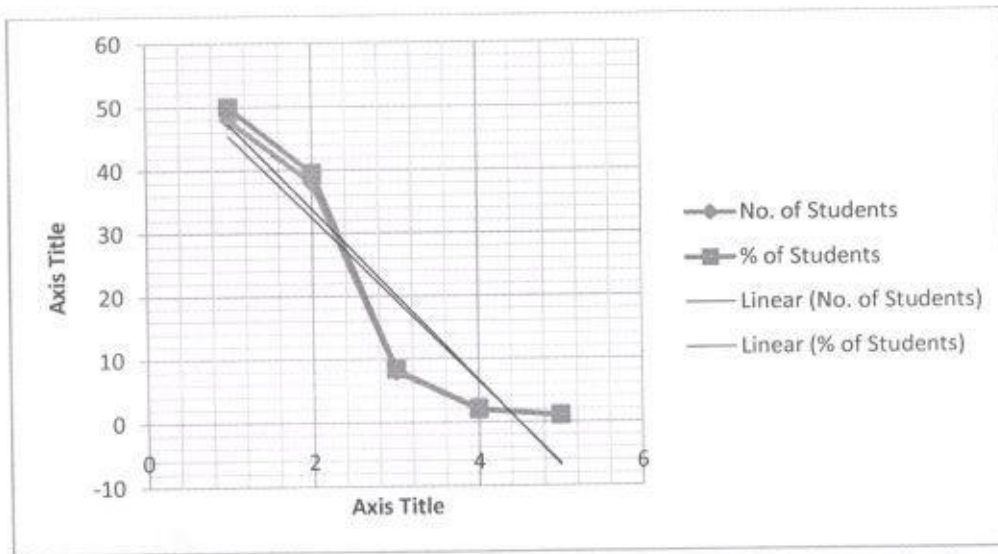


[Signature]
GRADE-1 PRINCIPAL
 K.L.E. Society's
 S.C.P. Arts, Science & B.D.S. Commerce College
 MAHALINGPUR-587312, Dist. Bagalkot

5. The curriculum effectively implemented in your institution.

Response	Strongly Agree	Agree	Moderate	Disagree	Strongly Disagree
No. of Students	48	38	8	2	1
% of Students	50.00	39.58	8.33	2.08	1.04

Percentage Responses of Students on Implementation of Curriculum

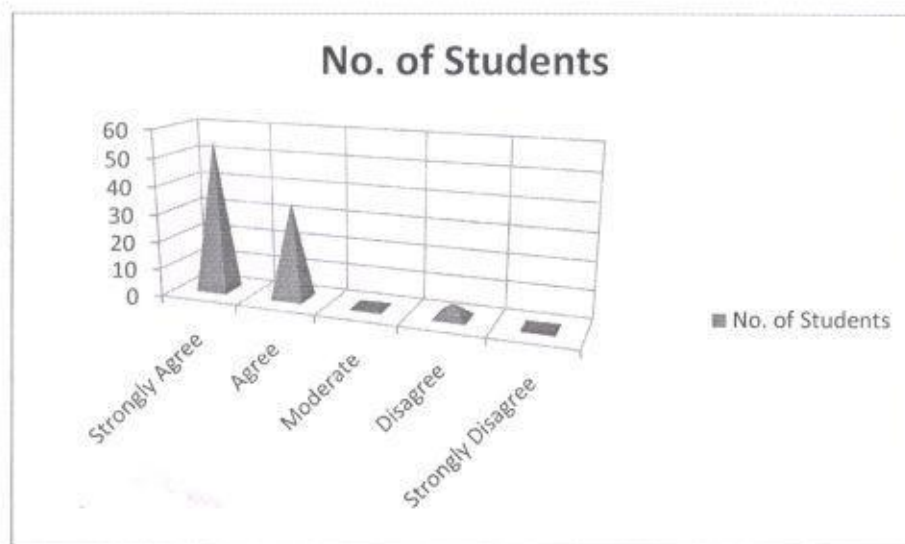


[Signature]
GRADE-1 PRINCIPAL
 K.L.E. Society's
 S.C.P. Arts, Science & B.D.S. Commerce College,
 MAHALINGPUR-587312, Dist. Bagalkot

6. Is library and labs are well infrastructure?

Response	Strongly Agree	Agree	Moderate	Disagree	Strongly Disagree
No. of Students	55	35	1	5	0
% of Students	57.29	36.46	1.04	5.21	0.00

Percentage Responses of Students on Library and Lab Facility



[Signature]

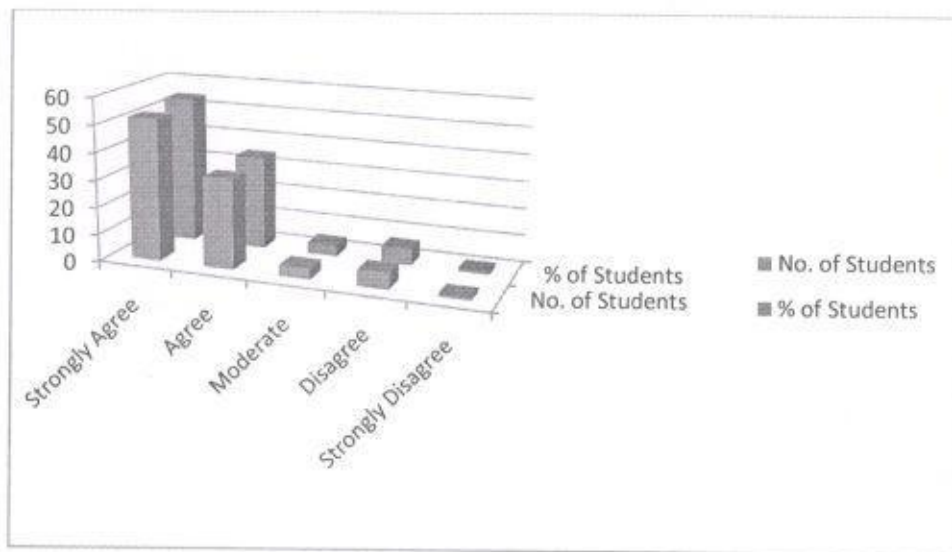
GRADE-1 PRINCIPAL
 K.L.E. Society's
 S.C.P.Arts, Science & B.D.S Commerce College
 MAHALINGPUR-587312. Dist. Bijapur



7. The overall quality of teaching learning process in your institute is very good.

Response	Strongly Agree	Agree	Moderate	Disagree	Strongly Disagree
No. of Students	52	33	4	6	1
% of Students	54.17	34.38	4.17	6.25	1.04

Percentage Responses of Students on Overall Quality Development



[Signature]
 GRADE-1 PRINCIPAL
 K.L.E. Society's
 S.C.P. Arts, Science & B.D.S. Comm. College
 MAHALINGPUR-587312, Dist. Udgalkot.